

ARUBA OUTDOOR MIMO ANTENNA KIT ANT-2X2-2314

ANT-2x2-2314 is a dual-polarized antenna with 30° H x 30° V beamwidths. This antenna is well suited for coverage along a street, spot coverage, or for covering a seating section in stadiums and other large public venues.

FREQUENCY/MAXIMUM GAIN

- 2.4 GHz to 2.5 GHz/14 dBi min

POLARIZATION

- H and V

BEAMWIDTH

- E Plane: 30°
- H Plane: 30°

IMPEDANCE

- 50 ohms

MAXIMUM INPUT POWER

- 6 watts

VSWR

- 1.5:1 typ

CONNECTORS

- N-type female x2 (RF cables not included)

DIMENSIONS

- 260 mm x 261 mm x 30 mm

WEIGHT

- 1,000 g

HOUSING

- Aluminum

RADOME MATERIAL

- Plastic

OPERATING TEMPERATURE

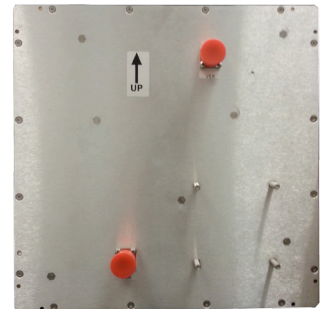
- -45° C to +65° C

INSTALLATION HARDWARE

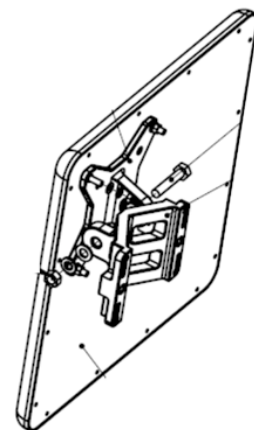
- Mount kit for wall and pole included



Front View

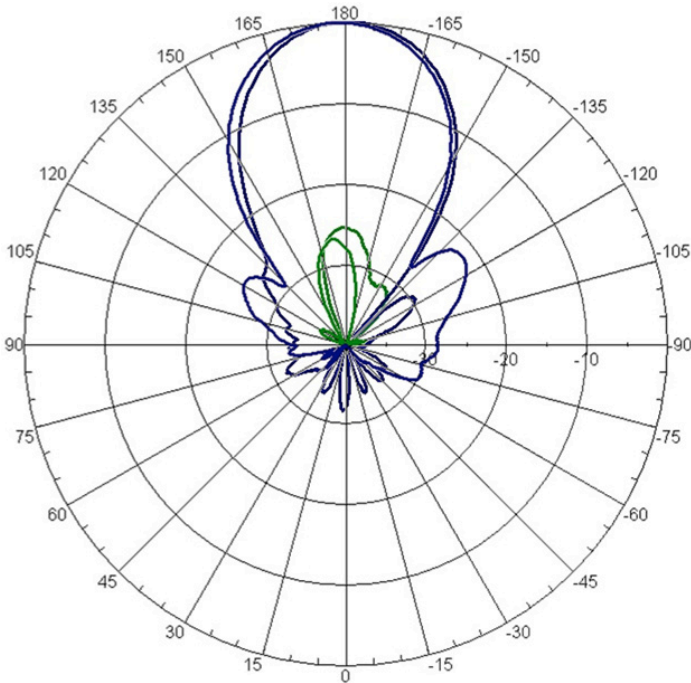


Back View

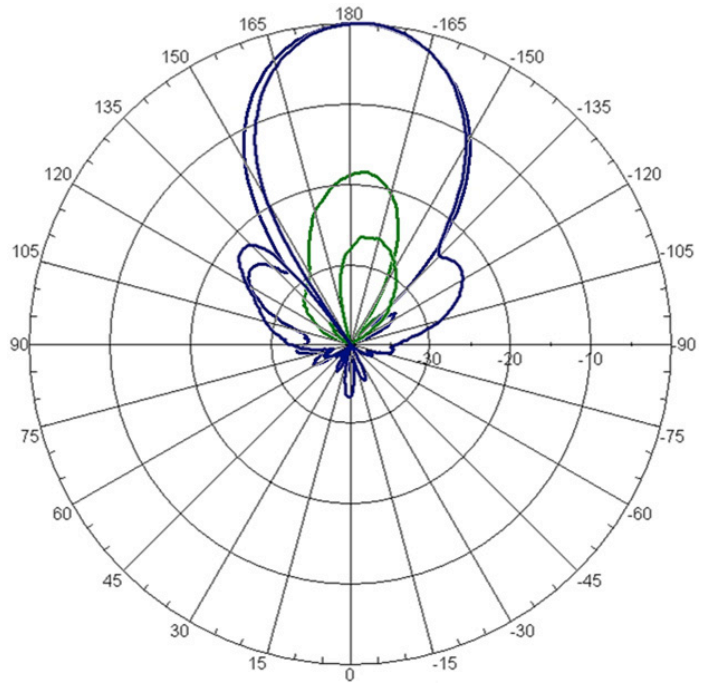


Mount Kit Illustration

ANTENNA PATTERNS



Vertical Pattern
Vertical and Horizontal Polarization (2.44 GHz)



Horizontal Pattern
Vertical and Horizontal Polarization (2.44 GHz)



www.arubanetworks.com

1344 Crossman Avenue, Sunnyvale, CA 94089

1-866-55-ARUBA | Tel. +1 408.227.4500 | Fax. +1 408.227.4550 | info@arubanetworks.com